



STANEX PORTEX LITEX

Transport cases

Battle Ready



EDAK
engineering aluminum

EDAK, excellence in aluminum

EDAK is a globally active company with manufacturing sites in the US and Switzerland, certified to ISO 9001:2000, with a global sales network. EDAK AG in Switzerland was founded in 1959 and is located in Dachsen, 40 km north of Zurich. EDAK Inc. (US operation) is located in Melbourne, Florida near Cape Canaveral, and was founded in 1986.

With a well-trained and highly productive staff, EDAK designs and manufactures transit and transport cases exclusively in aluminum. All EDAK aluminum cases are engineered to withstand the severity of field operations, military, and commercial transport usage. We design and manufacture both standard and nonstandard aluminum transit cases for rack- and flange-mount electronic equipment needing protection from a variety of elements, such as shock, vibration, water, dust, etc. EDAK also fabricates cases for general transport purposes.

We manufacture all cases to your exact specifications, irrespective of lot size. Since we use an aluminum sheet shell process, we are not restrained by sizing limitations inherent in plastic molds or deep-drawn aluminum cases that use a die process. This advantage is utilized across all EDAK case lines. With EDAK, you will never have to make compromises with case size, and you can achieve the smallest possible footprint with the highest level of protection.

With the EDAK range of transport cases, we cover all needs for the safe transport and storage of your valuable goods.

Contents

	Page
STANEX: lasting protection	4
STANEX transport case	5
PORTEX handheld case	8
PORTEX briefcase	9
PORTEX instrument case	11
LITEX LD (light duty)	12
LITEX HD (heavy duty)	13

STANEX: lasting protection

STANEX is a range of reinforced aluminum alloy cases with IATA certification for the transport of hazardous goods.

The unique design of the STANEX case results in special ruggedized features. Specially formed galvanized steel corner elements provide the most positive vertical stacking capability available. The rubber grip, spring-loaded drop handles can each support a load of more than 100 lbs. Secure closing is provided by specially-designed stirrup latches, which have padlock fittings. This guarantees the safety and security of your equipment. Your problems are over when packed in a STANEX transport case.

STANEX transport cases

The STANEX case is constructed of a special lightweight, salt-water-resistant aluminum alloy. Custom sizes are easily handled since our cases are not molded or deep drawn. STANEX cases are spray water tight. Stanex cases have IATA approval UN 4B1/ Y120/S/ 89/CH2659/EDAK for air shipment of hazardous cargo, and offer IP54 protection against dust and moisture.



Standard sizes are as follows:

Type	External dimension (L x W x H – inches)	Internal dimension (L x W x H – inches)	Clearance (L x W – inches)	Number of handles	Weight (in lbs.)
EF 4305	23.8 x 16.3x 10.0	22.4 x 15.0x 8.5	20.9 x 13.4	3	14.3
EF 4310	23.8 x 16.3x 19.7	22.4 x 15.0x 18.2	20.9 x 13.4	2	18.3
EF 4315	32.5 x 23.8 x 10.0	31.1x 22.4 x 8.5	29.7 x 20.9	4	26.6
EF 4320	32.5 x 23.8 x 19.7	31.1x 22.4 x 18.2	29.7 x 20.9	4	33.7

Features



STACKING WEIGHT LOAD

STANEX cases can withstand a stacked load of more than 2600 lbs.

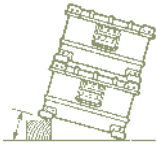
STACKING TEST

Two cases can be tilted to an angle of 15 degrees without lateral slip.

CARRYING HANDLES

The number of carrying handles is optional. Load capacity of each handle is 110 lbs. A rubber grip is provided for user comfort.

The handles are securely mounted with rivets.



STIRRUP LATCHES

Specially designed stirrup latches are used to ensure positive fastening and secure locking of the lid.

SPRAY WATER AND DUST TEST

Spray water and dust protection conforms to test standard EN60529.

DROP TEST

STANEX lightweight aluminium cases containing a net weight of 220 lbs. can withstand a fall from nearly five feet onto a hard surface without sustaining damage which impairs normal function.

CORNER REINFORCEMENTS

Galvanized steel corner reinforcements are riveted to the case bottom and covers to provide additional strength, protection and positive stacking.

FOAM LINING

We offer general foam lining with a thickness of 1 to 2 inches, or with cushioning configured specifically for your payload based on the fragility and dimension of the equipment.

STACKING WEIGHT LOAD

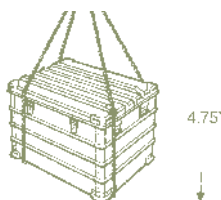
STANEX cases can withstand a stacked load of 2600 lbs.

FINISH

Natural aluminum or painted finish available.

SIZES

Many standard sizes are available from our catalog and of course custom requirements.



Areas of application

The STANEX transport case is unsurpassed for dependable storage and transportation in any environment. Because of our ability to manufacture any size in any quantity, we can supply the case to your exact requirements. STANEX transport cases are used for commercial and military applications around the world.

Examples where STANEX transport cases are used for storage and transportation:

- Test equipment
- Mobile communication equipment
- Tools
- Spare parts
- Laboratory appliances
- Medical instruments, field hospitals
- Delicate instruments
- Dangerous goods
- Valuables
- Currency



PORTEX handheld cases

The PORTEX briefcase combines an attractive design with clean lines and rugged durability. It is built for high mobility, where its tough design and lightweight construction is appreciated. It is ideal for use as a sample case and for safe transport of valuable electronics or instruments.

The outer shell is made from aluminum. An internal mounting flange is available for installation of an electronics or instrument panel. Due to minimal corner radii, the PORTEX briefcase offers optimal useable space in relation to case size.

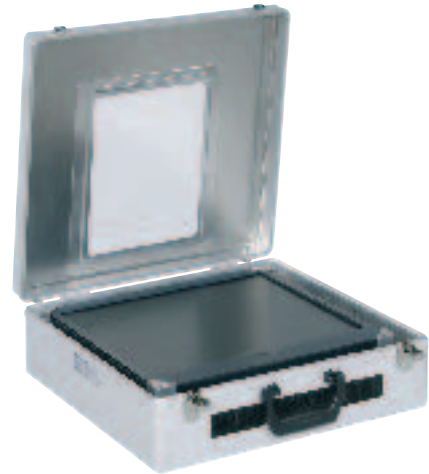
For customizing, the case can be foam lined. Several foam lining materials are available. As with all of our cases, the PORTEX briefcase can be built to suit in size, lining and accessories.

The PORTEX instrument case is designed with the most demanding needs for protection of sensitive equipment in scientific, military, marine, medical, agriculture or geophysical applications during field applications and with transport in mind. To protect instruments in transit or operation in hostile environments, PORTEX instrument cases meet or beat most required specifications. They are available in a wide range of sizes and options.

PORTEX briefcase

The PORTEX briefcase is designed to protect items such as small instruments, tools, cameras, or anything that needs to be hand-carried and which would be damaged in a soft case. It is also ideal for mobile instruments such as sophisticated GPS devices.

The PORTEX briefcase is designed with internal modification in mind. It uses the same aluminum sheet shell process as our other cases. As standard products, we offer two sizes and two distinct finishes. We can modify to accommodate interior brackets, mounts, compartments, and markings such as silk screening. Custom designed partitions and fold-down dividers are available. The cover can also be made removable.



Features

PROTECTION

- Climatic stress such as rain, snow, hail, humidity, heat and blowing dust and sand
- Minor shock and vibration with the use of a foam lining
- Electro Static Discharge with the use of ESD-rated foam

CHARACTERISTICS

- Rugged aluminum construction
- Chrome-plated ball-type closure
- Luggage-type handle
- Moisture-proof
- Corrosion-resistant piano-type hinge with stainless steel pin

WEATHERPROOFING

- Interlocking tongue-and-groove extrusion for watertight protection

FINISH

- Natural aluminum or hammered finish that resists scratching
- Several foam materials are available, including ESD
- Rigid aluminum partitions are also available



Standard sizes available

Type	Finish (Surface)	Dimension external (L x W x H – inches)	Dimension internal (L x W x H – inches)	Weight (in lbs.)
EF 2118	Natural	18.0 x 14.2 x 5.2	17.8 x 13.0 x 5.0	7.0
EF 2119	Natural	20.8 x 15.0 x 7.2	20.5 x 13.8 x 7.0	7.9
EF 2141	Texture	18.0 x 14.2 x 5.2	17.8 x 13.0 x 5.0	5.7
EF 2142	Texture	20.8 x 15.0 x 7.2	20.5 x 13.8 x 7.0	6.6

PORTEX instrument case

The PORTEX instrument case is extremely rugged, versatile and waterproof, offering the widest ranges of sizes and options available, with both short lead times and low cost. They are ideal for the safe transportation and field operation of delicate equipment for commercial, industrial and military use.

Design characteristics

- Meets all applicable requirements of MIL-28800, performance levels of MIL-STD-810-F, and the watertight requirements of IP65
- Protection of latches and hardware is achieved through the use of guarded latches and handles, or by incorporating "V" rails along the perimeter of the case.
- Widest range of sizes available
- Can be configured to exact size required, unlike deep-drawn cases
- Shock and vibration isolation options are available
- Offers many special features that help ensure the safe delivery of intricate instruments in transit, and operation in hostile environments.

Special features

- Stirrup latches are used to insure positive fastening and security locking of lid
- Flange available for mounting instruments and electronics
- Available with foam interiors engineered to your specifications
- Spring-loaded recessed top and side handles
- Pressure relief valve manual or automatic
- Custom design requirements are easily incorporated to accommodate special connectors, hardware, etc.



LITEX-LD light duty cases

The LITEX value case offers an economical solution for your transport and storage needs. Our Light Duty (LD) cases are built tough for most commercial and consumer applications.

These cases have superior volume-to-weight ratio, making them much lighter than comparable cases made of other materials. LITEX-LD cases are manufactured from tough, yet lightweight, aluminum alloy. They are stackable, and are available in standard sizes (stackable with competitors' cases).

The LITEX-LD value case can be customized with foam lining or inserts and painted to your color choice.



2-wheel removable trolley option

LITEX-LD Part No.	Internal Dimensions			External Dimensions			Cubic Feet
	Length	Width	Height	Length	Width	Height	
EF22.1406	21.7	13.8	5.9	22.8	14.9	7.1	1.0
EF22.1409	21.7	13.8	8.7	22.8	14.9	9.8	1.5
EF22.1412	21.7	13.8	12.2	22.8	14.9	13.4	2.1
EF22.1415	21.7	13.8	15.0	22.8	14.9	16.1	2.6
EF22.2215	21.7	21.7	15.0	22.8	22.8	16.1	4.1
EF30.2215	29.5	21.7	15.0	30.7	22.8	16.1	5.5
EF30.2223	29.5	21.7	22.8	30.7	22.8	24.0	8.4
EF46.3019	45.3	29.5	18.9	46.4	30.7	20.1	14.6
EFTROLLEY1	2-wheel removable anodized aluminum trolley with retractable handle						
FOAM	Optional and customized upon request						
KEYLOCKSLD	Key-lock set for LITEX-LD case (pair)						

LITEX-HD industrial strength cases



The LITEX-HD case offers a tough solution for your transport and storage needs. HD stands for heavy duty, and this case is just that!

These cases are built to hold your cargo, yet they still retain an excellent volume-to-weight ration. This makes it much lighter than comparable cases made of other materials. It is manufactured from tough, yet lightweight, aluminum alloy. LITEX-HD cases are stackable (compatible with competitive brands) and are available in standard sizes.

The LITEX-HD value case can be customized with foam lining or inserts and painted to your color choice. We have additional accessories available, including 2-wheel trolley and key-lock sets.



LITEX-HD Part No.	Internal Dimensions			External Dimensions			Cubic Feet
	Length	Width	Height	Length	Width	Height	
EF22.1406HD	21.7	13.8	5.9	22.8	14.9	7.1	1.0
EF22.1409HD	21.7	13.8	8.7	22.8	14.9	9.8	1.5
EF22.1412HD	21.7	13.8	12.2	22.8	14.9	13.4	2.1
EF22.1415HD	21.7	13.8	15.0	22.8	14.9	16.1	2.6
EF22.2215HD	21.7	21.7	15.0	22.8	22.8	16.1	4.1
EF30.2215HD	29.5	21.7	15.0	30.7	22.8	16.1	5.5
EF30.2223HD	29.5	21.7	22.8	30.7	22.8	24.0	8.4
EF46.3019HD	45.3	29.5	18.9	46.4	30.7	20.1	14.6
EFTROLLEY1	2-wheel removable anodized aluminum trolley with retractable handle						
FOAM	Optional and customized upon request						
KEYLOCKS1D	Key-lock set for LITEX-HD case (pair)						

Acknowledgements

Text: EDAK AG, FD, 1200, August 2005

Images: Croci & du Fresne Fotografie, Bern

Concept/Design: MASCIADRI Communication & Design, Bern

